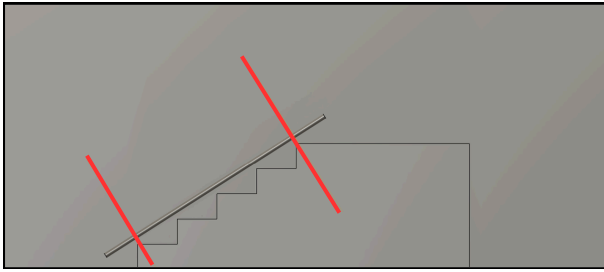


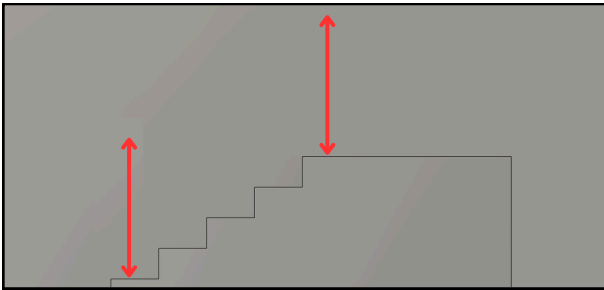


### 1 Measure the steps



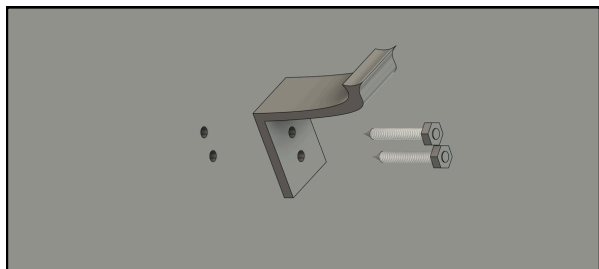
- Measure the steps from top to bottom stair nosing
- Add preferred overhang length and cut the rail

### 3 Measure preferred height



- Measure for preferred height (typically 35" to 38")
- You can mark either bracket height or rail height

### 5 Install wall plugs



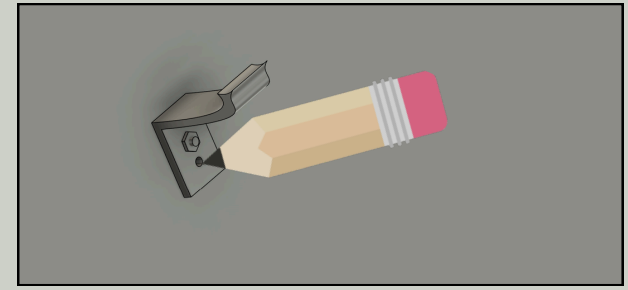
- Drill holes smaller than the wall plugs (They should fit tight)
- Make sure the wall plugs sit below flush to prevent gaps between wall and bracket

### 2 Fasten brackets



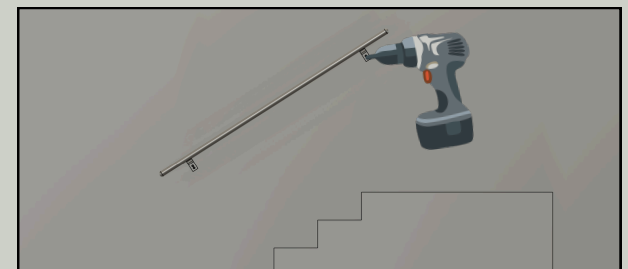
- Fasten brackets 1 foot from the ends with self-tapping screws, and attach end caps using a rubber mallet
- Use a flat surface with cardboard to prevent scuffs and scratches

### 4 Fasten rail loosely



- Locate a stud to confirm proper backing is in place
- Fasten the rail loosely and mark bracket holes

### 6 Fasten rail



- Fasten the rail tightly to the wall